

# MONITOR BRACKET GS-KA-T100S50 With Torque & Auxiliary Lock

INSTRUCTION



- Can be quickly installed and removed.
- Free stops in a range of 180° (swivel) and 40° (tilt).
- Auxiliary lock prevents monitor from sagging due to minute vibration. Also suitable for touch screen.
- Auxiliary lock temporarily releases if a heavy load is applied when locked.
- Bracket holes based on VESA standard (75x 75mm, 100x 100mm).
- Applicable monitor size: 12~22.9 inch (Up to about 10.0kg)

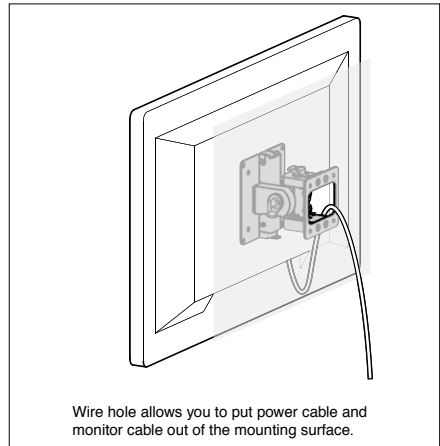
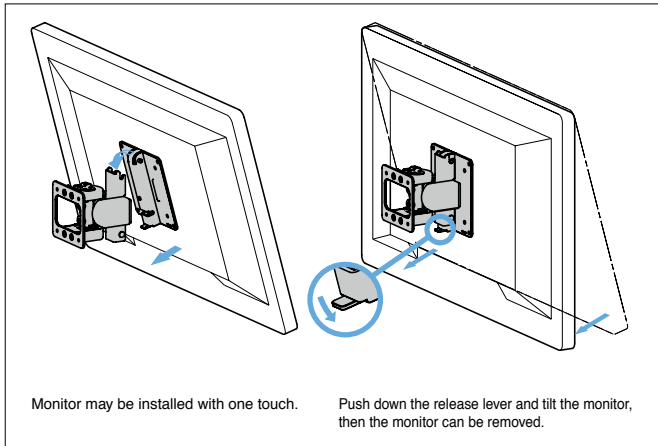
### [Applications]

- Liquid crystal monitors for machine tools, OA equipment and medical equipment, etc.

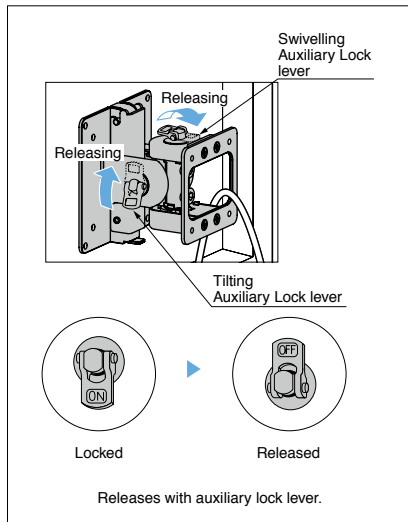
### [Remarks]

- Do not forcibly move the monitor after applying the auxiliary lock.
- After installing the monitor, make sure that the release lever is locked.
- Do not operate continuously (repeatedly in a short time).

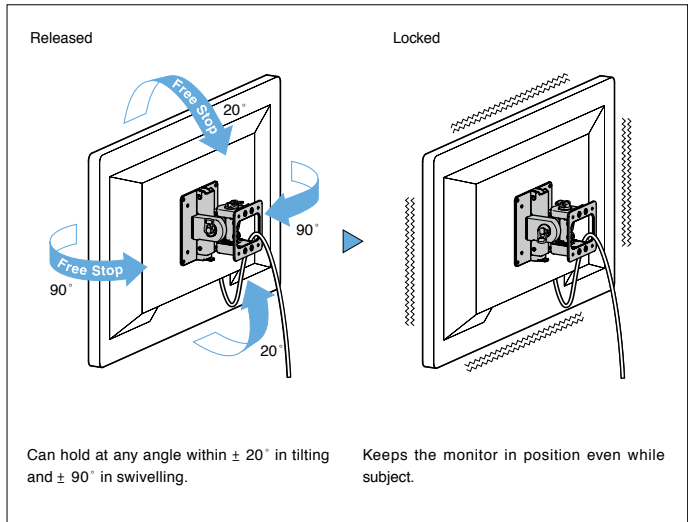
### [How to Install and Remove Monitor]

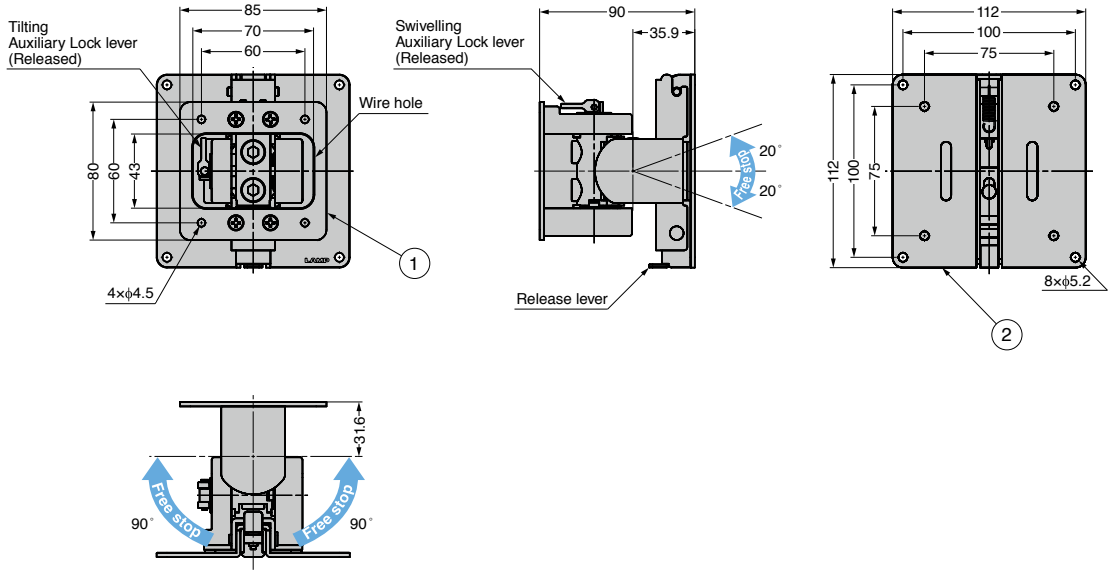


### [Auxiliary Lock Operation]



### [How to Adjust Angle]





No.	Part Name	Material	Finish / Colour
①	Body (Wall Side)	Steel (SPCC)/ ABS	Black
②	Base (Monitor Side)		

Item Name	Mounting	Torque (Tilting) N·m/pc	Torque (Tilting) kgf·cm/pc	Torque (Swivelling) N·m/pc	Torque (Swivelling) kgf·cm/pc	Weight (kg)
GS-KA-T100S50	Wall Mount	10.0 ± 20%	102.0 ± 20%	5.0 ± 20%	51.0 ± 20%	1